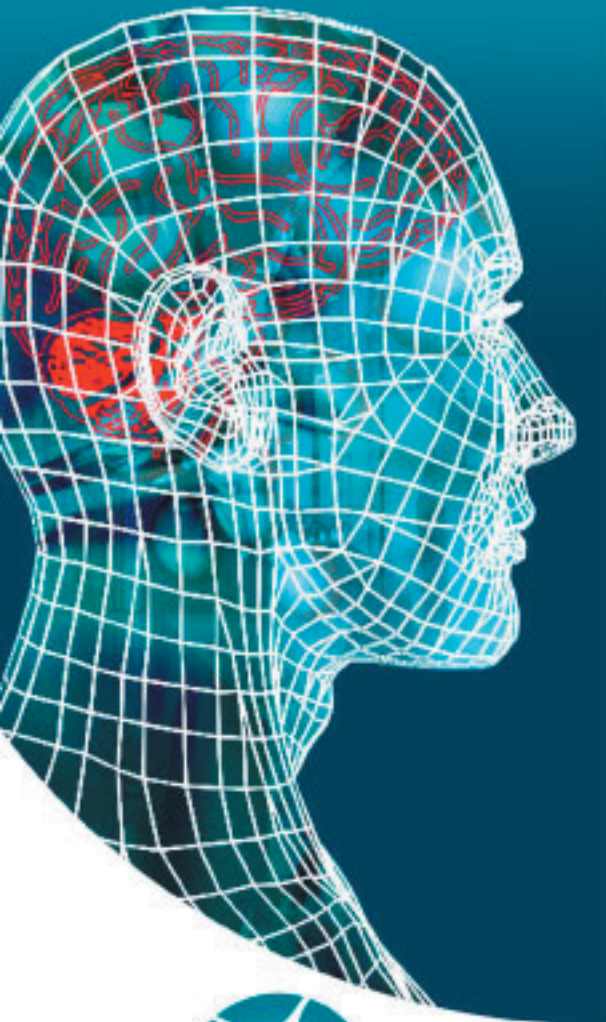




Cochlear
Implant
System

Digisonic® SP



Smooth Profile...

Digisonic® SP

20 channel implant

- Low-power electronic stimulator
- Fast and easy positioning
- Secure fixation using two screws
- MRI compatible 1,5 T
- High reliability - 10 year warranty
- Improved structural design.



Neurelec
An MXM Company

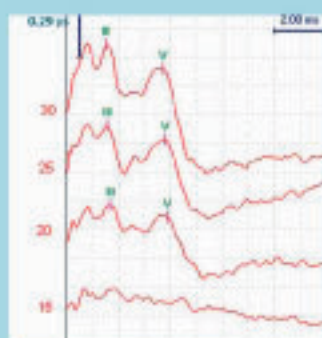
Humanizing Technology



Two-screw fixation



20 electrodes



EABR's

References

I-SP-SD	Digisonic®SP Implant alone
I-SP-SD and E-SP-TX7	Full system Digisonic®SP with Digi SP processor
I-SP-SD and E-SP-TX8	Full system Digisonic®SP with Digi SP ^K processor
I-SP-MA20 (customized solution) and E-SP-TX7	Full system Digisonic®SP Multi-Array with double-array cochlear implant for ossified cochlea and Digi SP processor

General features

- Receiver dimensions: 4,9 mm edge - 5,75 mm centre - 30,2 mm diameter.
- Receiver materials: Titanium base - Ceramic cover Al_2O_3 - Silicone envelope.
- Silicone array with electrodes in platinum-iridium.
- MRI compatible 1,5 T - Warranty : 10 years.

Surgical features

- Fixation with two self-tapping bone screws, pre-positioned on the plastic tray.
- Surgery kit needed:
1 screwdriver (Ref : C-TVS-01), 1 fork (Ref : C-FT-01), 1 processor dummy (Ref: C-GB-01), 1 cochlear insertion gauge (Ref: C-JI-01- made-to-order if an ossification is observed at CT-scan examination).
- Insertion length: 25 mm.
- Advised size of cochleostomy: 1,0 mm.

Electrode array features

- 20 active electrodes.
- Active length of the electrode array: 25 mm.
- Base diameter (silicon ring): 1,05 mm.
- Apex diameter (distal extremity): 0,5 mm.
- 2 ground electrodes.

Stimulation features

- 20 channels. Current or voltage stimulation.
- Monopolar/common-ground stimulation through biphasic pulses.
- Capacitive coupling on each of the 20 electrodes: averaged residual current less than 100 nA.
- Selectable pulse amplitude.
- Pulse duration: from 1 to 120 μ s (resolution = 0,5 μ s).
- Stimulation frequency: 24 000 pps (pulses per second).
- Electrode impedance less than 2 k Ω .

Objective measures

- Digistim® SP USB diagnosis system (compatible with Windows 98 SE, ME, 2000, XP and Vista) allowing the realization of Electrical Auditory Brainstem Responses (EABR), Stapedius Reflex, Psychoacoustic Tests (such as the gap test, etc).
- Electrode impedance measurement by telemetry.

Contents of Digisonic® SP :

- 1 Digisonic®SP implant - 1 Silicone dummy implant
- 2 Screws - 1 Owner card - 1 Instruction for use - 1 Implantation form
- 1 Explantation form - 1 Warranty certificate.

Neurelec
An MXM Company2720 Ch.St. Bernard 06224 VALLAURIS CEDEX
FRANCEwww.neurelec.com - contact@neurelec.com
TEL: +33 (0)4 93 95 18 18 - FAX: +33 (0)4 93 95 38 01

• GERMAN OFFICE

Neurelec GmbH - Lebacher Str. 4 - 66113 Svartrücken - TEL: +49 681 99 63 352 - FAX: +49 681 99 63 111 - E-mail: neurelecGmbH@neurelec.com

• MIDDLE EAST OFFICE

Neurelec Middle East - 3 Elmerghany St. From Zidan St. Ma'adi 3 Cairo - EGYPT - TEL: +20107707068 - E-mail: middleEast@neurelec.com

CE 0459